



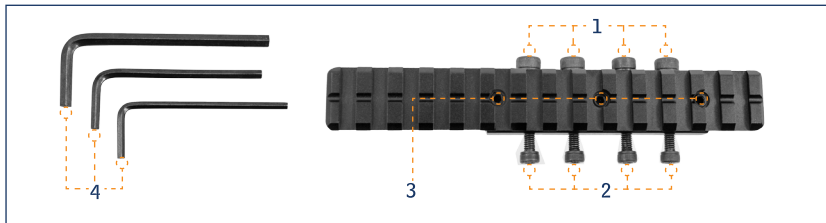
UNIVERSAL DOVETAIL TO PICATINNY/WEAVER ADAPTOR

INSTALLATION INSTRUCTION

MUM060011511

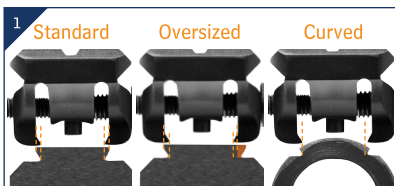
CAUTION Make sure safety is on and airgun is unloaded!

Parts Included



1. Adaptor Clamp Expansion Screws (4mm)
2. Long Adaptor Screws (3mm)
3. Vertical Stop Pin Screws (2.5mm)
4. 2.5mm, 3mm, and 4mm Allen Wrenches

Standard/Oversized/Curved Dovetail Rail Installation



1. The adaptor can be installed in either direction along the Dovetail rail. All screws are pre-installed on the adaptor for installation on either a standard, oversized, or curved Dovetail rail. Make sure the 4mm Adaptor Clamp Expansion Screws are flush against the adaptor before proceeding any further.



2. Perform a pre-installation check. Fit the adaptor onto the Dovetail rail to determine if it clamps and fully seats onto the Dovetail rail evenly.



a) If the adaptor is not wide enough to clamp and fully seat onto the Dovetail rail evenly, proceed to step 3 for adaptor clamp expansion instructions.



b) If the adaptor clamps and fully seats onto the Dovetail rail evenly, skip step 3 and proceed to step 4.



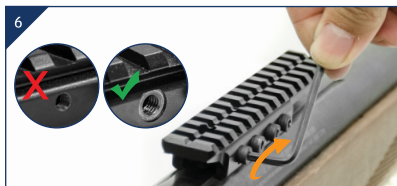
3. To perform the adaptor clamp expansion, utilize the long arm of the 3mm Allen Wrench to tighten the 4 Long Adaptor Screws evenly to expand the adaptor's clamping width. Recheck the fit every 1/2 turn until the adaptor is able to fully seat onto the Dovetail rail evenly. (Do not over torque/over expand the screws and/or use power tools.)



4. Once the adaptor is fully seated onto the Dovetail rail evenly, use the 3mm and 4mm Allen Wrenches to remove all screws from both sides of the adaptor by turning the screws counterclockwise. Make sure the adaptor stays seated on the Dovetail rail and is not removed.



5. If the receiver has a stop pin hole(s), align the adaptor's Vertical Stop Pin(s) with the receiver stop pin hole(s). Use the 2.5mm Allen Wrench to screw the Vertical Stop Pin(s) clockwise until just above the receiver stop pin hole(s). Do not fully engage the Vertical Stop Pin(s) within the receiver stop pin hole(s), this will be completed in a later step. Make sure the position of the adaptor stays indexed for the remainder of the installation.



6. Reinstall the 4 Long Adaptor Screws with the 3mm Allen Wrench, turning clockwise to tighten. Do not exceed 25 in-lb of torque. Make sure the screws are installed through the side of the adaptor with the larger and more recessed screw holes (the screw holes in which the 4mm Adaptor Clamp Expansion Screws were originally installed in out of the box).



7. Use the 2.5mm Allen Wrench to complete the tightening of the Vertical Stop Pin(s) until full engagement of the receiver stop pin hole(s) is achieved. Do not exceed 15 in-lb of torque.



8. Installation is complete.

Should there be a Vertical Stop Pin(s) without an accompanying receiver stop pin hole(s), tighten the Vertical Stop Pin(s) until snug against the receiver. Do not exceed 5 in-lb of torque.